



Analysis

District AIDS Councils Response to the HIV& AIDS,STIs & TB Multi-Sectoral Response Quarter 4 2014/2015

Dr NI Ndlovu
Chief Directorate Priority Programmes
Office of the Premier, KZN
03/08/2015



Summary

Summary

KZNPSO Objective: To increase access to quality of care and support to at least 90% of the OVC by 2016

Registration of Orphans & Vulnerable Children (OVC):

- 43% of the estimated number of orphans & vulnerable children in the province had been registered as compared to 41% in quarter 3 2014/2015.
- Harry Gwala (146%), Amajuba (75%) and uMgungundlovu (69%) with highest registration percentages..
- Zululand (15%) and uMkhanyakude (17%) remained with the lowest registration percentages.
- Remaining districts registration percentages ranged from 33% (uThukela) to 55% (uThungulu)
- In 2014/2015 Ugu, uMzinyathi and uThukela only districts showing consistent increase in registration.

Care and Support of Orphans & Vulnerable Children:

- 43% of the estimated number of OVC were receiving care and support in Q4 2014/2015 as compared to 44% in Q3 2014/2015.
- Harry Gwala (162%) uThungulu (88%) and Amajuba (76%) with highest percentages of OVC receiving care & support
- Zululand (23%) and eThekweni (15%) remain the districts with the lowest percentages of OVC receiving care & support
- Remaining districts care and support percentages ranging from 56%(Ugu) to 28%(uMkhanyakude)

Care and Support of Orphans & Vulnerable Children:

- An assumption that the criteria for receiving care and support was registration, 99% of the registered OVC were receiving care and support.

Summary

KZNPSPP Objective: To decrease behaviours that put men and women aged 15-49 years at Risk of HAST through implementation of focussed programmes by 2016

KZNPSPP Objective: To reduce the risk of mother to child transmission to less than 1% by 2016

Learner Pregnancies:

- eThekwini and uMkhanyakude with highest learner pregnancy numbers in 2014/2015.
- Amajuba, uMgungundlovu and Zululand showing consistent decrease.
- 7 districts: eThekwini, Harry Gwala, iLembe, Ugu, uMkhanyakude, uThukela and uThungulu with increases in learner pregnancy numbers between Q3 & Q4 2014/2015
- uMzinyathi data missing.

Deliveries under 18 Years:

- Generally there is a decreasing trend in deliveries under 18 years.
- uMkhanyakude has shown consistent decrease in deliveries under 18 years over Q2, Q3 and Q4 2014/2015
- 7 districts: eThekwini, Harry Gwala, iLembe, Ugu, uMzinyathi uThungulu and Zululand with increases in learner pregnancy numbers between Q3 & Q4 2014/2015

Summary

KZNPSPP Objective: To reduce the risk of mother to child transmission to less than 1% by 2016

Infants Positivity at around 6 weeks:

- The PCR rate for most districts ranged between 0.8% (uMgungundlovu) to 1.8% (Ugu)
- uMgungundlovu is the only district to have met the target of less than 1%
- In Quarter 4 2014/2015, 3 districts-Amajuba, eThekwini and uThungulu had a positivity rate of less than one.
- 5 districts Ugu, uMgungundlovu, uMkhanyakude, uThukela and Zululand showed an increase in positivity rate between Q3 and Q4.
- Zululand positivity rate generally rising

KZNPSPP Objective: To ensure that 100% of men and women aged 15-49 know their HIV status and receive TB screening by 2016

HIV Testing:

- eThekwini and uMgungundlovu recorded the highest number of tests in 2014/2015.
- Most districts (9) showed an increase in numbers tested between Q3 and Q4.
- 6 districts: Amajuba, Harry Gwala, Ugu, uMkhanyakude, uMzinyathi and uThungulu achieved set targets for 2014/2015
- eThekwini only district to show consistent increase in the numbers tested over the 4 quarters in 2014/2015.
- uMzinyathi and uThungulu only two districts not to have shown an increase in numbers tested between Q3 and Q4

Summary

KZNPSPP Objective: To scale up male medical circumcision services to 80% of males aged 15-49 years

Medical Male Circumcision:

- No district was able to achieve target for 2014/2015
- 8 districts: eThekweni, iLembe, Ugu, uMgungundlovu, uMkhanyakude, uMzinyathi, uMzinyathi, uThungulu and Zululand increased their MMC numbers between Q3 and Q4 2014/2015.
- Amajuba, Harry Gwala and uThukela showed decrease between Q3 and Q4 2014/2015
- uThukela showed consistent decrease over all the quarters in 2014/2015

KZNPSPP Objective: To ensure that 100% of men and women aged 15-49 have access to condoms by 2016

Male Condoms Distribution:

- 4 districts achieved distribution targets.
- uMgungundlovu and uMzinyathi were joined by iLembe, uThukela in achieving distribution targets.
- uMgungundlovu remains the district distributing most number of male condoms.
- uThungulu has shown consistent increase in distribution over the three quarters.
- uMgungundlovu has however shown consistent decrease over the quarters.

Male condoms distributed per male per quarter:

- uMgungundlovu distributed the highest number of male condoms per male in 2014/2015.
- 4 districts: iLembe, uMgungundlovu, uMzinyathi, uThukela achieved the set targets. iLembe, uMkhanyakude and uThungulu remained districts with the lowest number of condoms per male ranging 20 -34

Summary

KZNPSPP Objective: To ensure that 100% of men and women aged 15-49 have access to condoms by 2016

Female Condoms Distribution

- All districts achieved target set.
- 3 districts eThekweni and Ugu joined uMgungundlovu as districts that distributed the highest number of female condoms in Q4.
- eThekweni, uMgungundlovu, uMzinyathi and Ugu distributed the highest number of female condoms in 2014/2015.
- Amajuba and uMkhanyakude distributed the lowest number of female condoms in Q4 2014/2015.

KZNPSPP Objective: To reduce the risk of HIV transmission from occupational exposure, sexual violence and discordance to less than 1% by 2016

Sexual Assault Cases:

- 9 districts: Amajuba, eThekweni, iLembe, Ugu, uMgungundlovu, uMkhanyakude, uMzinyathi, uThukela and Zululand showed a decrease in sexual assault cases between Q3 and Q4 2014/2015
- Harry Gwala and uThungulu showed increase over Q3 and Q4 2014/2015
- Generally sexual assault cases decreased

Summary

KZNPSPP Objective: To reduce the risk of HIV transmission from occupational exposure, sexual violence and discordance to less than 1% by 2016

Children under 12 Sexually Assaulted (%):

- Sexual Assault cases in children remains generally high across districts
- 7 districts: eThekwini, Harry Gwala, Ugu, uMgungundlovu, uMkhanyakude, uThukela and Zululand all showed an increase between Q3 and Q4
- Amajuba and uThungulu only districts that recorded a decrease

KZNPSPP Objective: To ensure that at least 90% of HIV infected people have access to treatment and support, remain adherent to treatment and maintain optimum health by 2016

Clients on ART

- All districts showing increases in numbers of clients on ART

ART clients lost to follow up

- 5 districts: Amajuba, eThekwini, Ugu, uMgungundlovu, uMzinyathi recorded increases in numbers lost to follow up between 2014/2015.
- uThukela with one of the highest number of lost to follow up
- Lost to follow up number across all districts generally high

Summary

***KZNPS Objective: To strengthen coordination and management for an effective provincial response by 2016
To strengthen monitoring & evaluation systems at all levels and ensure that at least 90% of the sectors report to coordination structures by 2016***

Local AIDS Councils submitting reports

- Just about 40 % of LACs reported to DAC

Ward AIDS Committees

- Generally Ward AIDS Committees not reporting to LACs

Analysis, Dashboards & Graphs

Analysis: Registration of Orphans & Vulnerable Children

- By quarter 4 2014/2015, 43% of the estimated number of orphans & vulnerable children in the province had been registered as compared to 41% in quarter 3 2014/2015.
- uThungulu joined Amajuba, Harry Gwala and uMgungundlovu districts with the highest percentage of OVC registered so far.
- 7 districts: Amajuba, eThekwini, Harry Gwala, iLembe, Ugu, uMkhanyakude and uThukela recorded increases in the number of OVC registered between Q3 and Q4 2014/2015.
- Registration percentage across other districts still low.
- Zululand and uMkhanyakude remained with the lowest registration percentages.

Analysis: Orphans & Vulnerable Children receiving Care & Support

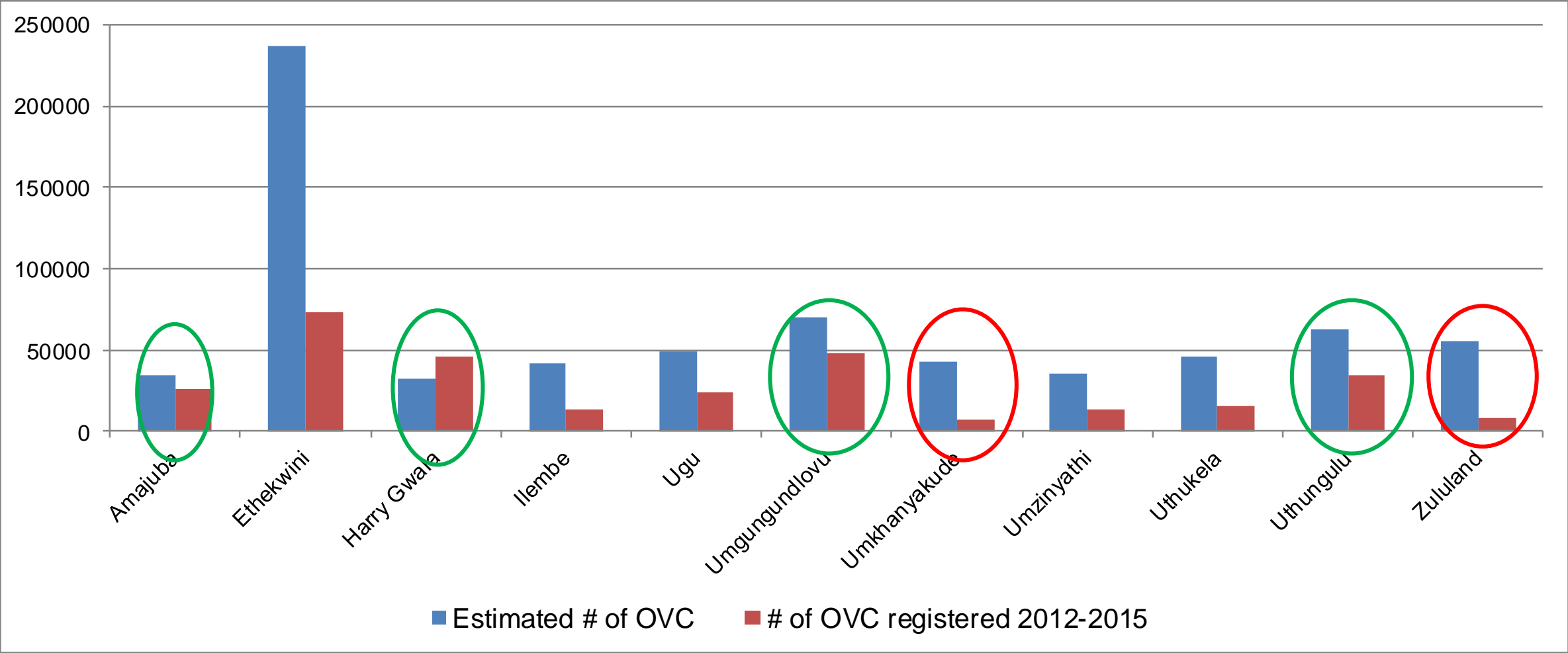
- By Q4 2014/2015, 42% of the estimated number of OVCs were receiving care and support as compared to 44% in Q3 2014/2015.
- 5 Districts had the highest percentages of OVC receiving care and support. Amajuba and Harry Gwala were joined by uThungulu, Ugu and uMzinyathi as districts with the highest percentage of OVC receiving care & support.
- 7 districts recorded increases in the number of OVC receiving care and support between Q3 and Q4 2014/2015. Amajuba and Harry Gwala were joined by iLembe, Ugu, uMgungundlovu, uMkhanyakude and uMzinyathi in recording increases in the number of OVC receiving care and support between Q3 and Q4 2014/2015.
- As in quarter 3 2014/2015, Zululand (11%) & eThekwini (15%) remained the districts with the lowest percentages of OVC receiving care & support

Dashboard 2: Total number and % of orphans & vulnerable children (OVC) registered 2012-2015

	Estimated # of OVC 2013	Total number of OVC registered (2012- 2015)	% registered
Amajuba	34748	26063	75%
eThekwini	237561	73372	31%
Harry Gwala	31912	46483	146%
iLembe	41839	13269	32%
Ugu	49640	24066	48%
uMgungundlovu	70205	48271	69%
uMkhanyakude	43257	7157	17%
uMzinyathi	35457	13019	37%
uThukela	46094	14089	33%
uThungulu	62404	34241	55%
Zululand	55123	6615	15%

Source of OVC estimates: Actuarial Society of South Africa 2013

Graph 2: Total Orphans & Vulnerable Children (OVC) registered 2012-2015/Estimated # of OVC

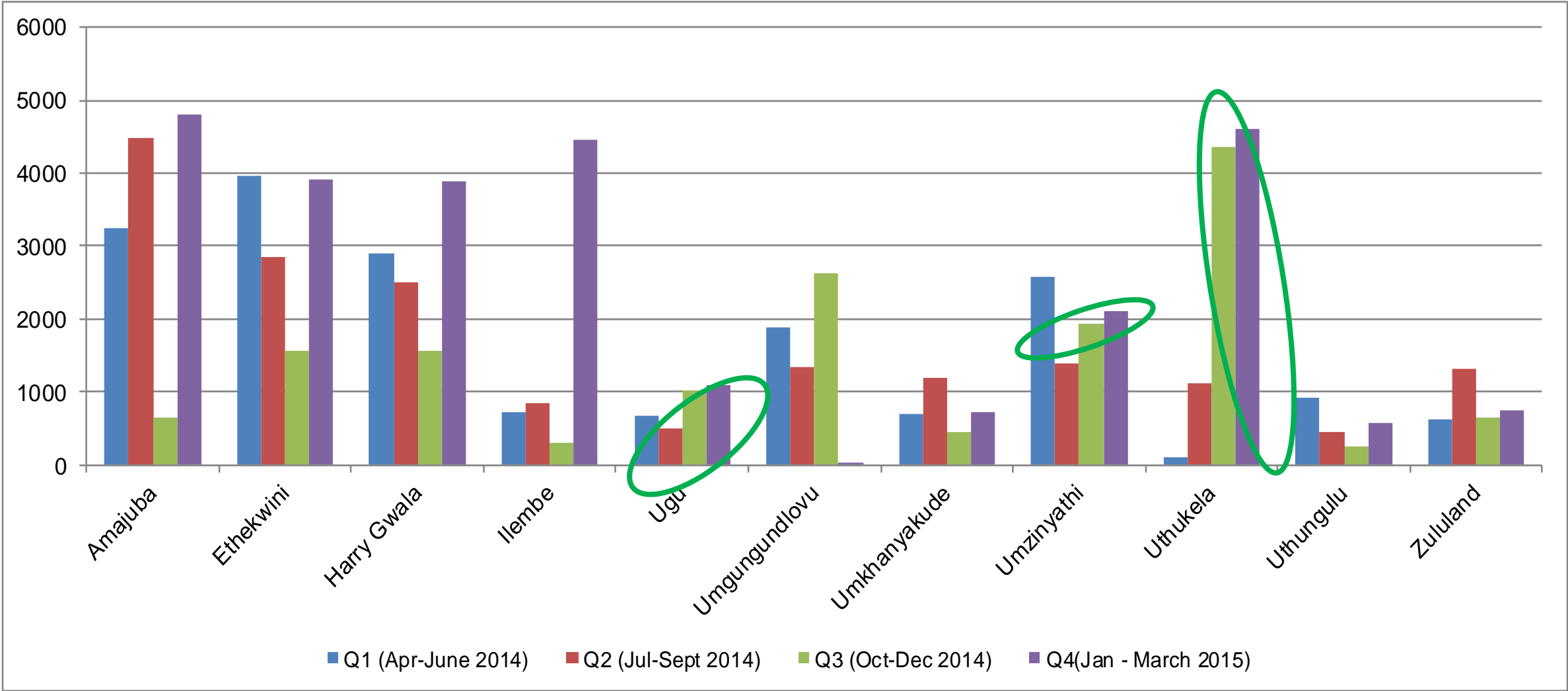


Source of OVC estimates: Actuarial Society of South Africa 2013

Dashboard 1: OVC registered 2014/2015 per quarter (district)

	Q1 FY2014/2015 (Apr-June 2014)	Q2 FY2014/2015 (Jul-Sept 2014)	Q3 FY2014/2015 (Oct-Dec 2014)	Q4 FY2014/2015 (Jan-March 2015)
Amajuba	3242	4486	8653	4807
eThekwini	3961	2849	1549	3914
Harry Gwala	2890	2492	1562	3893
iLembe	714	840	303	4457
Ugu	659	492	1015	1081
uMgungundlovu	1871	1332	2634	30
uMkhanyakude	703	1186	452	721
uMzinyathi	2570	1396	1919	2096
uThukela	91	1103	4367	4617
uThungulu	922	446	258	579
Zululand	623	1305	635	739

Graph 1: OVC registered 2014/2015 per quarter (district)

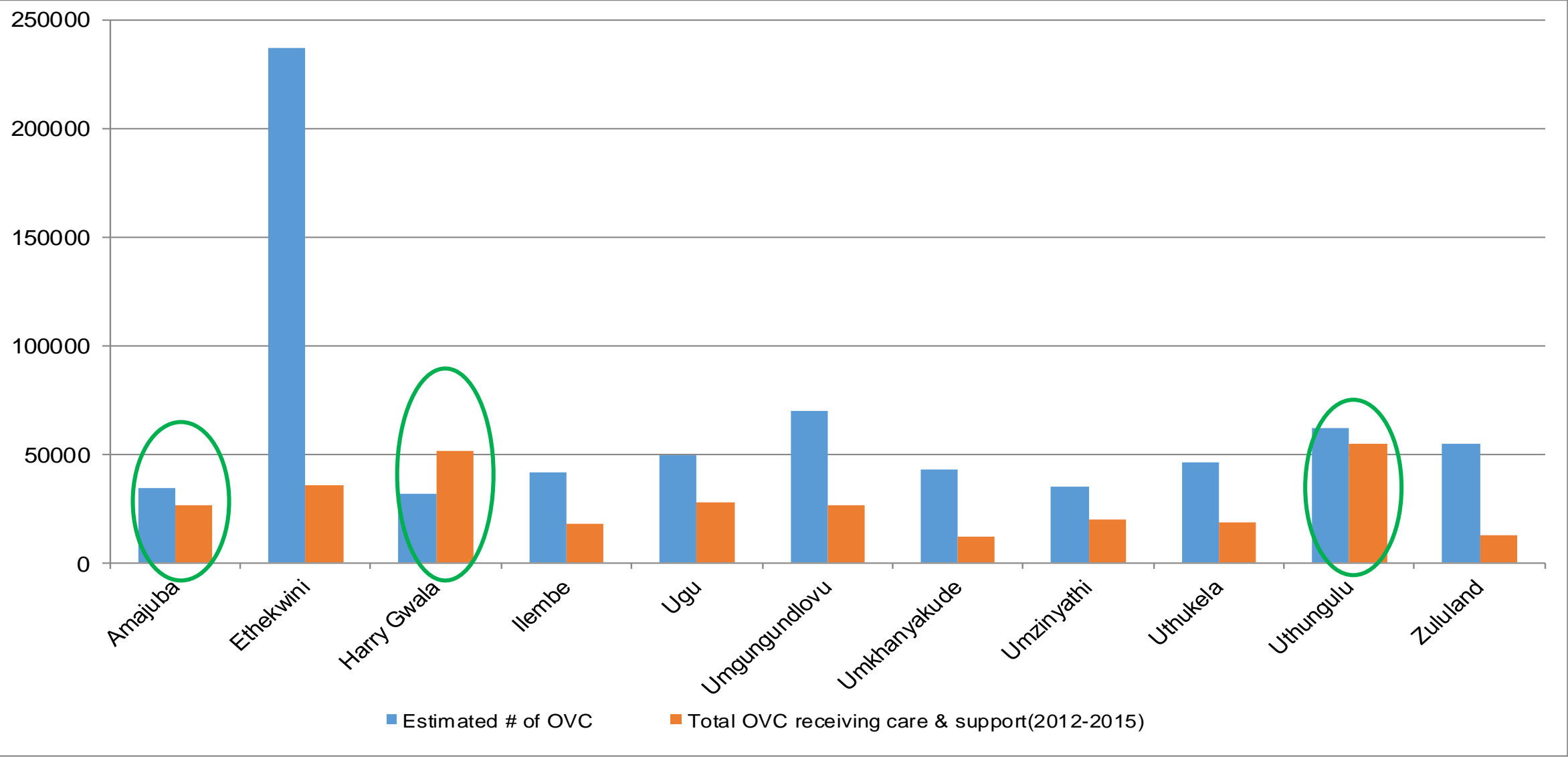


Dashboard 4: Total number & % of OVC receiving care & support 2012-2015 (district and province)

	Estimated Number of OVC	Total number of receiving care & support (2012-2015)	% receiving care & support/Estimated Number
Amajuba	34748	26576	76%
eThekwini	237561	36090	15%
Harry Gwala	31912	51846	162%
iLembe	41839	17909	43%
Ugu	49640	27709	56%
uMgungundlovu	70205	26877	38%
uMkhanyakude	43257	12225	28%
uMzinyathi	35457	19908	56%
uThukela	46094	19018	41%
uThungulu	62404	55055	88%
Zululand	55123	12796	23%

Source of OVC estimates: Actuarial Society of South Africa 2013

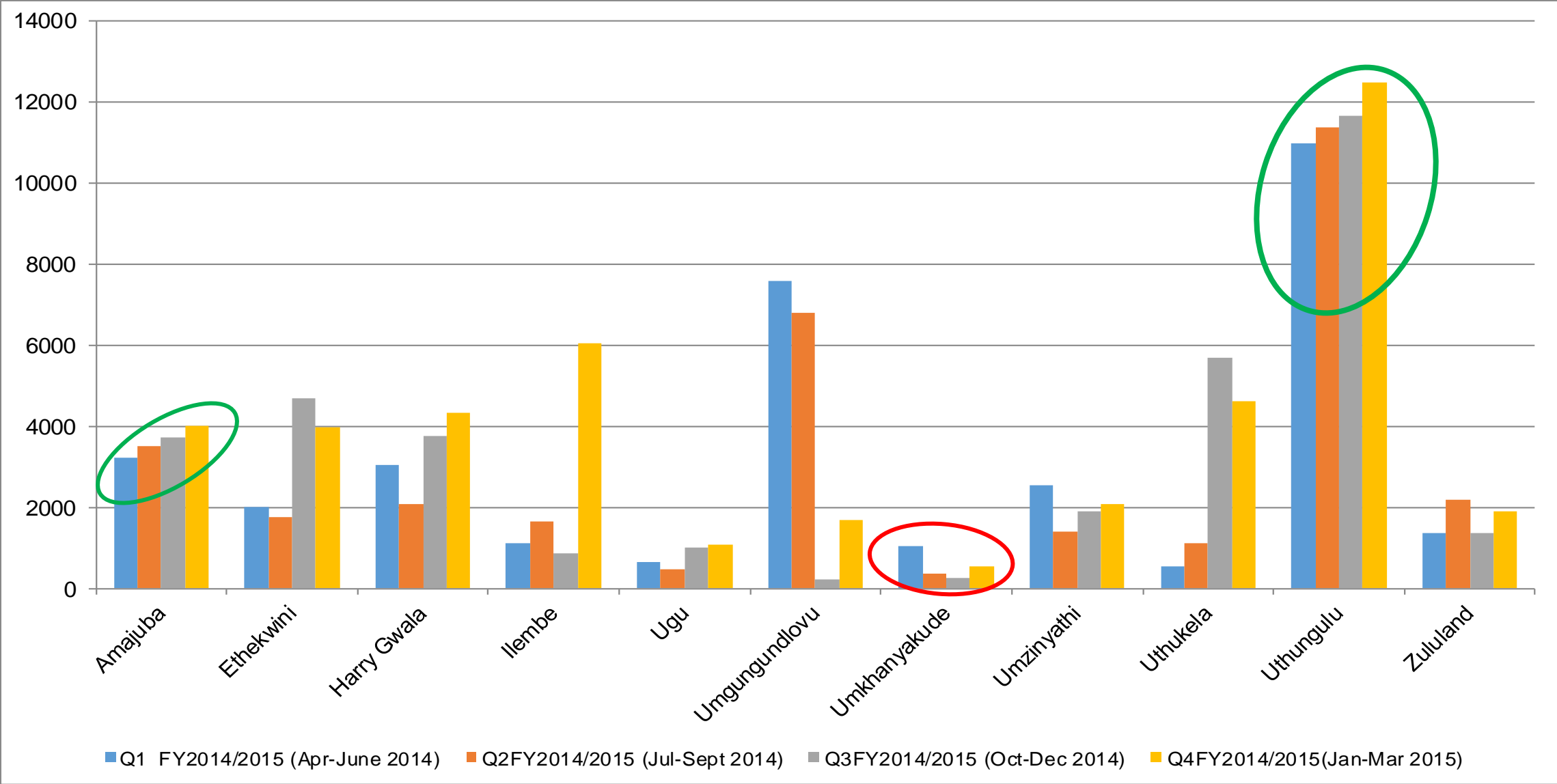
Graph 4: Total number of registered OVC receiving care & support 2012-2015 (district)



Dashboard 3: OVC receiving care & support per quarter 2014/2015 (district)

	Q1 FY2014/2015 (Apr-June 2014)	Q2 FY2014/2015 (Jul-Sept 2014)	Q3 FY2014/2015 (Oct-Dec 2014)	Q4 FY2014/2015 (Jan-March 2015)
Amajuba	3242	3522	3721	4007
eThekwini	2029	1757	4706	3969
Harry Gwala	3042	2087	3757	4343
iLembe	1131	1661	865	6041
Ugu	659	492	1015	1081
uMgungundlovu	7608	6815	224	1709
uMkhanyakude	1042	359	280	562
uMzinyathi	2570	1396	1919	2096
uThukela	551	1119	5704	4617
uThungulu	11009	11386	11675	12477
Zululand	1387	2207	1375	1916

Graph 3: Registered OVC receiving care & support 2014/2015 per quarter (district)



Analysis: Learner Pregnancies

- 7 districts: eThekweni, Harry Gwala, iLembe, Ugu, uMkhanyakude, uThukela and uThungulu with increases in learner pregnancy numbers between Q3 & Q4 2014/2015
- Amajuba and Zululand showing decrease

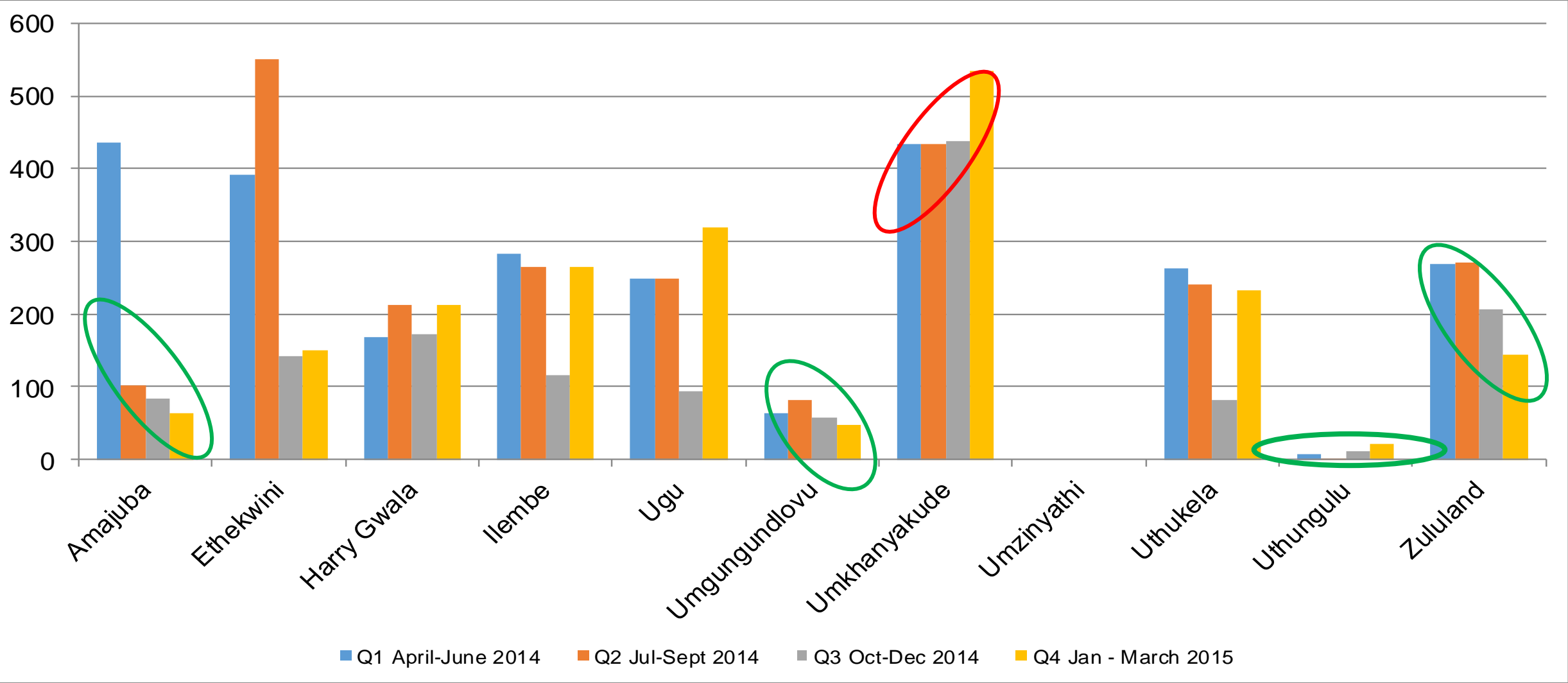
Analysis: Deliveries under 18 Years

- Quarter 4 2014/2015 had 4053 deliveries as compared to 3893 in Quarter 3.
- 4 districts: Amajuba, uMgungundlovu, uMkhanyakude and uThukela showed decreases in deliveries under 18 between Q3 and Q4 2014/2015.
- There was a total of 15235 deliveries under 18 in the province 2014/2015.
- Generally decreasing trend in deliveries under 18

Dashboard 5: Learner Pregnancies 2014/2015 per quarter (district)

	Q1 FY2014/2015 (Apr-June 2014)	Q2 FY2014/2015 (Jul-Sept 2014)	Q3 FY2014/2015 (Oct-Dec 2014)	Q4 FY2014/2015 (Jan-March 2015)	Total 2014 / 2015
Amajuba	435	103	83	63	684
eThekwini	392	551	143	150	1236
Harry Gwala	169	212	172	212	765
iLembe	283	265	116	265	929
Ugu	249	249	93	320	911
uMgungundlovu	64	81	58	47	250
uMkhanyakude	433	434	438	534	1839
uMzinyathi					
uThukela	262	240	81	232	815
uThungulu	7	2	12	21	42
Zululand	266	271	206	145	888

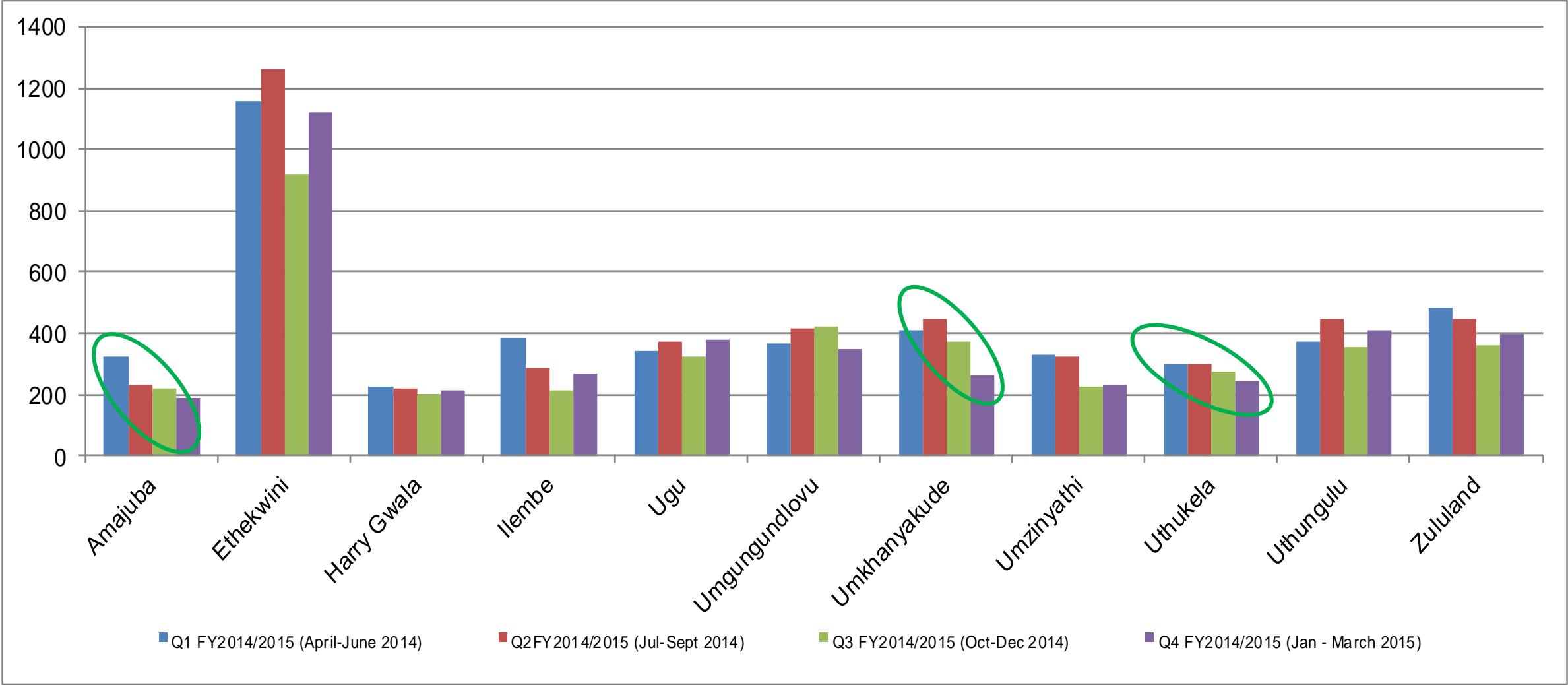
Graph 5: Learner Pregnancies per quarter 2014/2015(district)



Dashboard 6: Deliveries under 18 years per quarter 2014/2015 (district)

	Q1 FY2014/2015 (Apr-June 2014)	Q2 FY2014/2015 (Jul-Sept 2014)	Q3 FY2014/2015 (Oct-Dec 2014)	Q4 FY2014/2015 (Jan-March 2015)	Total 2014 / 2015
Amajuba	326	229	217	189	744
eThekweni	1160	1263	917	1122	4462
Harry Gwala	223	216	201	210	850
iLembe	385	285	214	268	1152
Ugu	340	370	324	376	1410
uMgungundlovu	368	413	420	348	1549
uMkhanyakude	411	446	372	262	1491
uMzinyathi	327	324	223	229	1103
uThukela	296	300	276	243	839
uThungulu	375	446	370	409	1600
Zululand	483	447	359	397	1686

Graph 6: Deliveries under 18 years 2014/2015 per quarter (district)



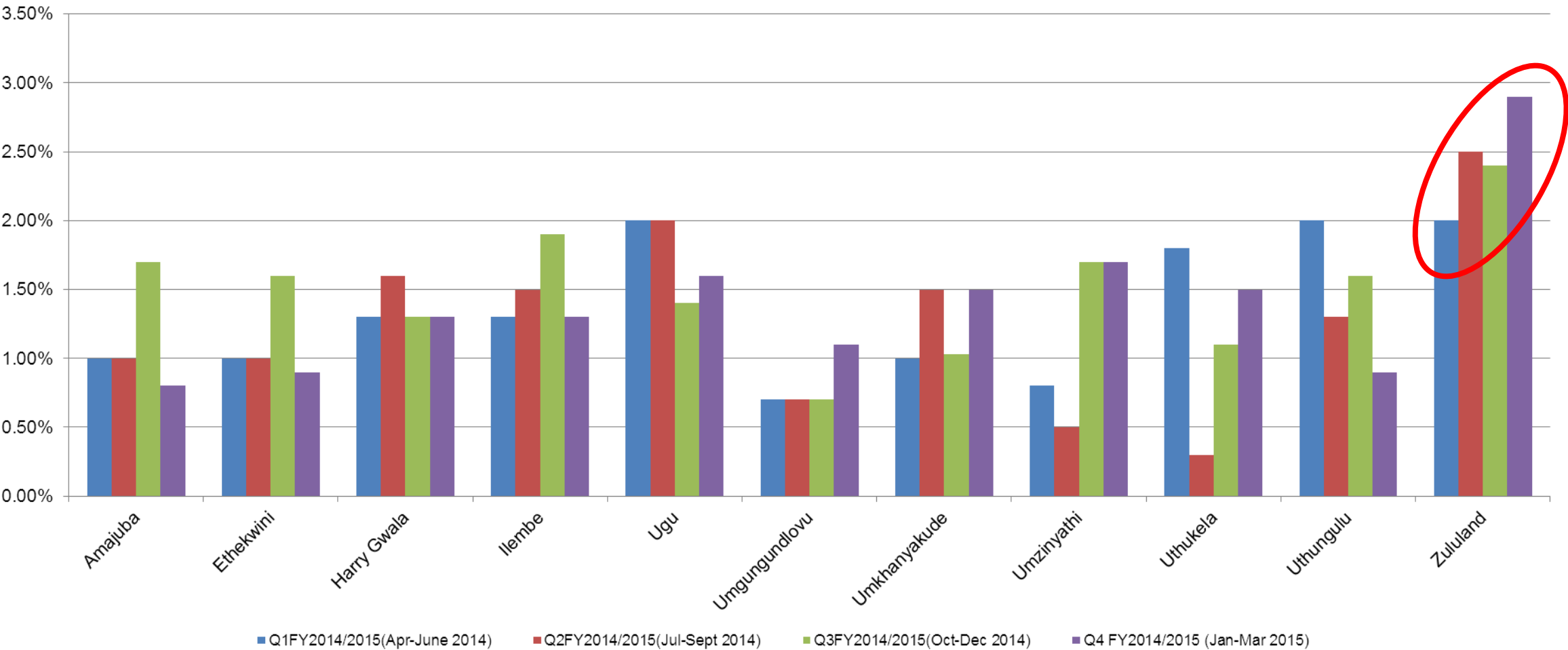
Analysis: Baby PCR tested positive at around 6 weeks rate

- The positivity rate for most districts ranged between 0.8% in uMgungundlovu to 1.8% in Ugu.
- Zululand's positivity rate was 2.5%
- uMgungundlovu is the only district to have met the target of less than 1%
- Amajuba, eThekwini and uThungulu with a rate of below 1% in Q4 2014/2015
- 5 districts Ugu, uMgungundlovu, uMkhanyakude, uThukela and Zululand showed an increase in positivity rate between Q3 and Q4.
- Zululand positivity rate generally increasing

Dashboard 7 : PCR positivity at around 6 weeks 2014/2015 per quarter (district)

	Q1 (Apr-June 2014)	Q2 (July – Sept.2014)	Q3 (Oct- Dec 2014)	Q4 (Jan - March 2015)	TOTAL 2014/201 5	Annual Target	Target Achieved
Amajuba	1.00%	1.00%	1.70%	0.80%	1.1%	<1%	
eThekwini	1.00%	1.00%	1.60%	0.90%	1.1%	<1%	
Harry Gwala	1.30%	1.60%	1.30%	1.30%	1.4%	<1%	
iLembe	1.30%	1.50%	1.90%	1.30%	1.5%	<1%	
Ugu	2.00%	2.00%	1.40%	1.60%	1.8%	<1%	
uMgungundlovu	0.70%	0.70%	0.70%	1.10%	0.8%	<1%	
uMkhanyakude	1.00%	1.50%	1.03%	1.50%	1.2%	<1%	
uMzinyathi	0.80%	0.50%	1.70%	1.70%	1.3%	<1%	
uThukela	1.80%	0.30%	1.10%	1.50%	1.2%	<1%	
uThungulu	2.00%	1.30%	1.60%	0.90%	1.5%	<1%	
Zululand	2.00%	2.50%	2.40%	2.90%	2.5%	<1%	

Graph 7 : PCR positivity at around 6 weeks 2014/2015 per quarter (district)



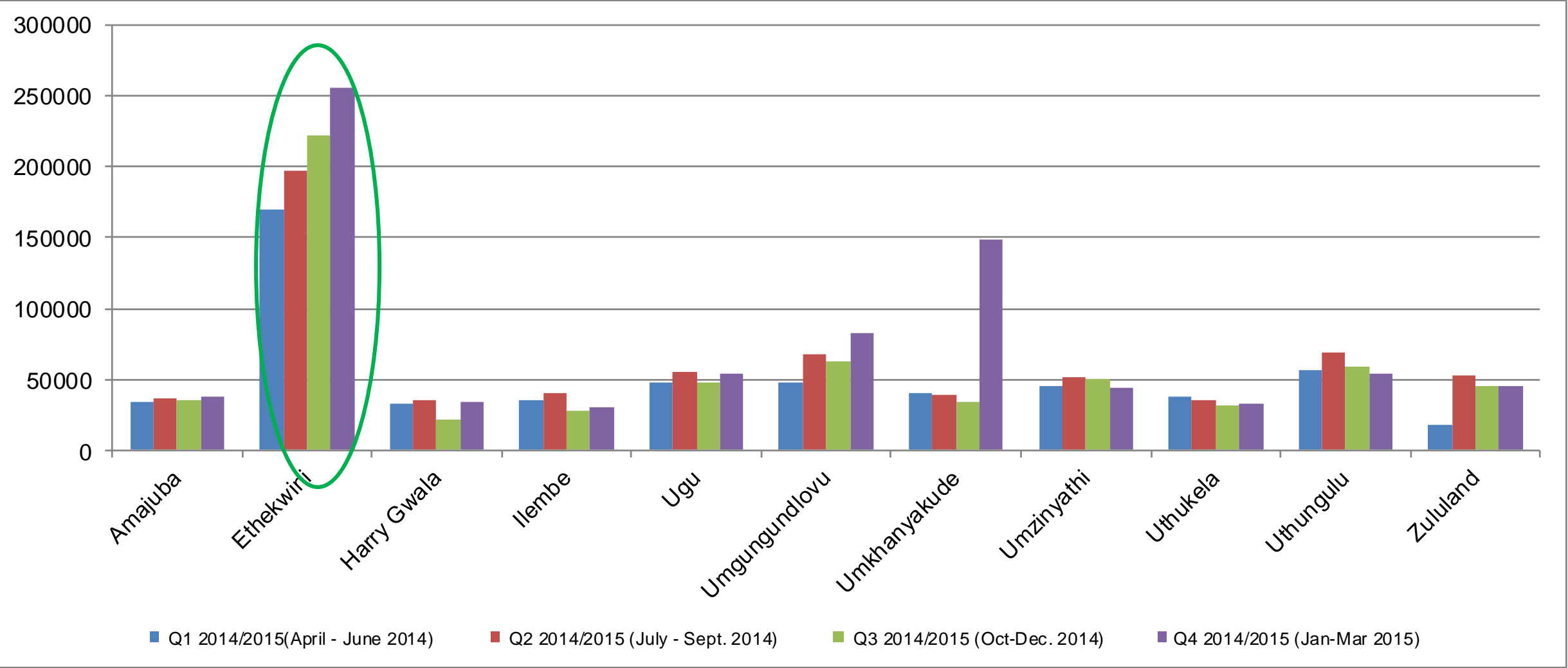
Analysis: HIV Testing

- eThekwini and uMgungundlovu recorded the highest number of tests in 2014/2015.
- Most districts (9) showed an increase in numbers tested between Q3 and Q4.
- 6 districts: Amajuba, Harry Gwala, Ugu, uMkhanyakude, uMzinyathi and uThungulu achieved set targets for 2014/2015
- eThekwini only district to show consistent increase in the numbers tested over the 4 quarters in 2014/2015.
- uMzinyathi and uThungulu only two districts not to have shown an increase in numbers tested between Q3 and Q4

Dashboard 8: HIV tests conducted 2014/2015 per quarter (district)

	Q1 (Apr-June 2014)	Q2 (July – Sept.2014)	Q3 (Oct- Dec 2014)	Q4 (Jan - March 2015)	Total tested 2014/ 2015	HIV testing Target 2014/15	Achieved Target
Amajuba	33598	36404	35761	37559	143322	125141	
EThekweni	169956	197018	221965	255792	844731	890662	
Harry Gwala	32440	35417	21902	33943	156142	116645	
iLembe	34982	40024	28420	30448	133874	151346	
Ugu	47184	55824	47977	54553	205538	181416	
uMgungundlovu	47618	68337	62751	82060	260766	261459	
uMkhanyakude	39826	39348	34061	149079	262314	148330	
uMzinyathi	44767	51075	50612	44074	190528	115231	
uThukela	37993	34970	31528	32754	137245	164023	
uThungulu	55952	69018	59099	54100	238169	232733	
Zululand	17599	52341	44679	45213	159832	197444	

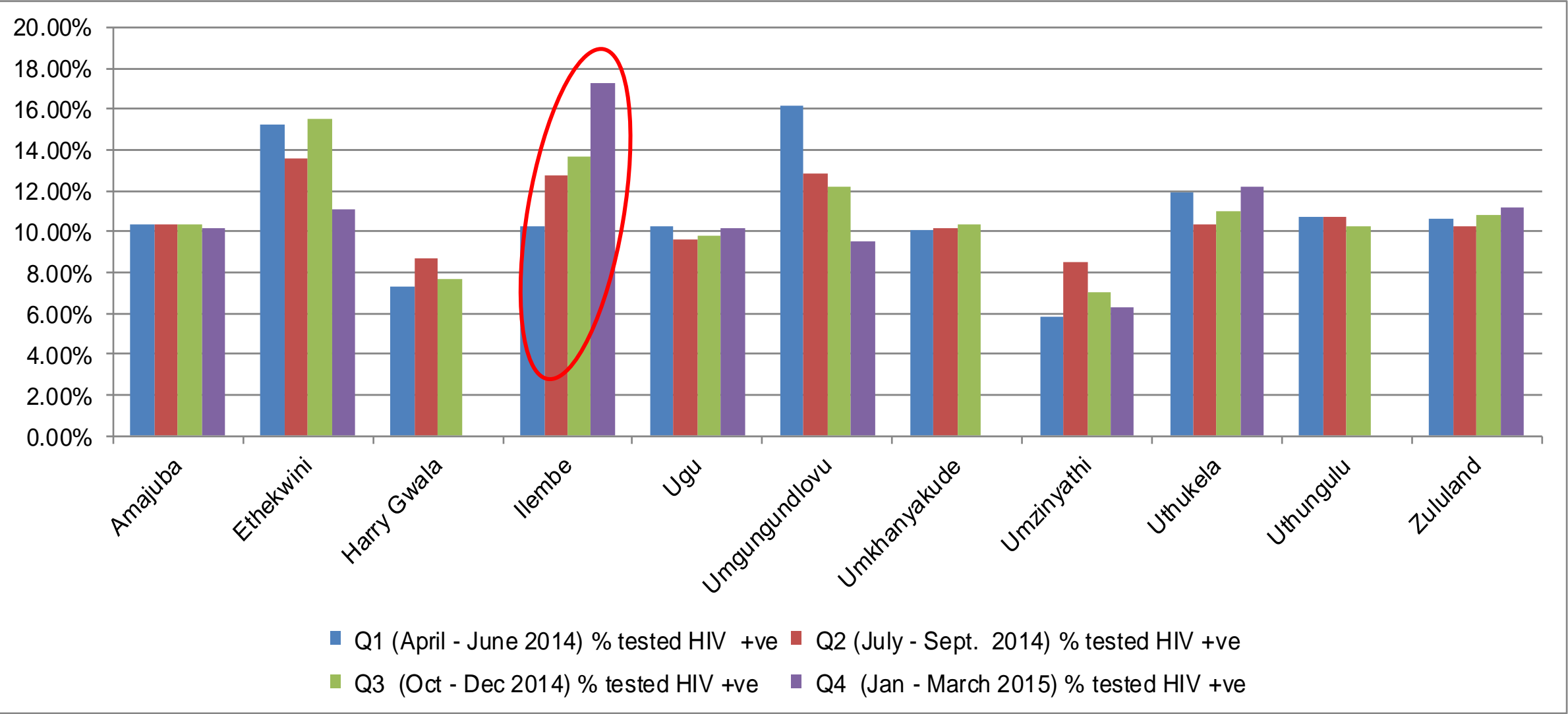
Graph 8: HIV tests 2014/2014 per quarter (district)



Dashboard 9: % tested HIV positive 2014/2015 per quarter (district)

	Q1 (Apr-June 2014)	Q2 (July – Sept.2014)	Q3 (Oct- Dec 2014)	Q4 (Jan - March 2015)	TOTAL
Amajuba	10.40%	10.40%	10.40%	10.20%	10.35%
eThekwini	15.30%	13.60%	15.50%	11.10%	13.88%
Harry Gwala	7.30%	8.70%	7.70%		
iLembe	10.30%	12.80%	13.70%	17.30%	13.53%
Ugu	10.30%	9.60%	9.80%	10.20%	9.98%
uMgungundlovu	16.20%	12.90%	12.20%	9.50%	12.70%
uMkhanyakude	10.10%	10.20%	10.40%		10.23%
uMzinyathi	5.80%	6.50%	7.00%	6.30%	6.40%
uThukela	11.90%	10.40%	11.00%	12.20%	11.38%
uThungulu	10.70%	10.70%	10.30%	11.99%	10.57%
Zululand	10.60%	10.30%	10.80%	11.20%	10.70%

Graph 9: % of positive cases 2014/2015 per quarter (district)



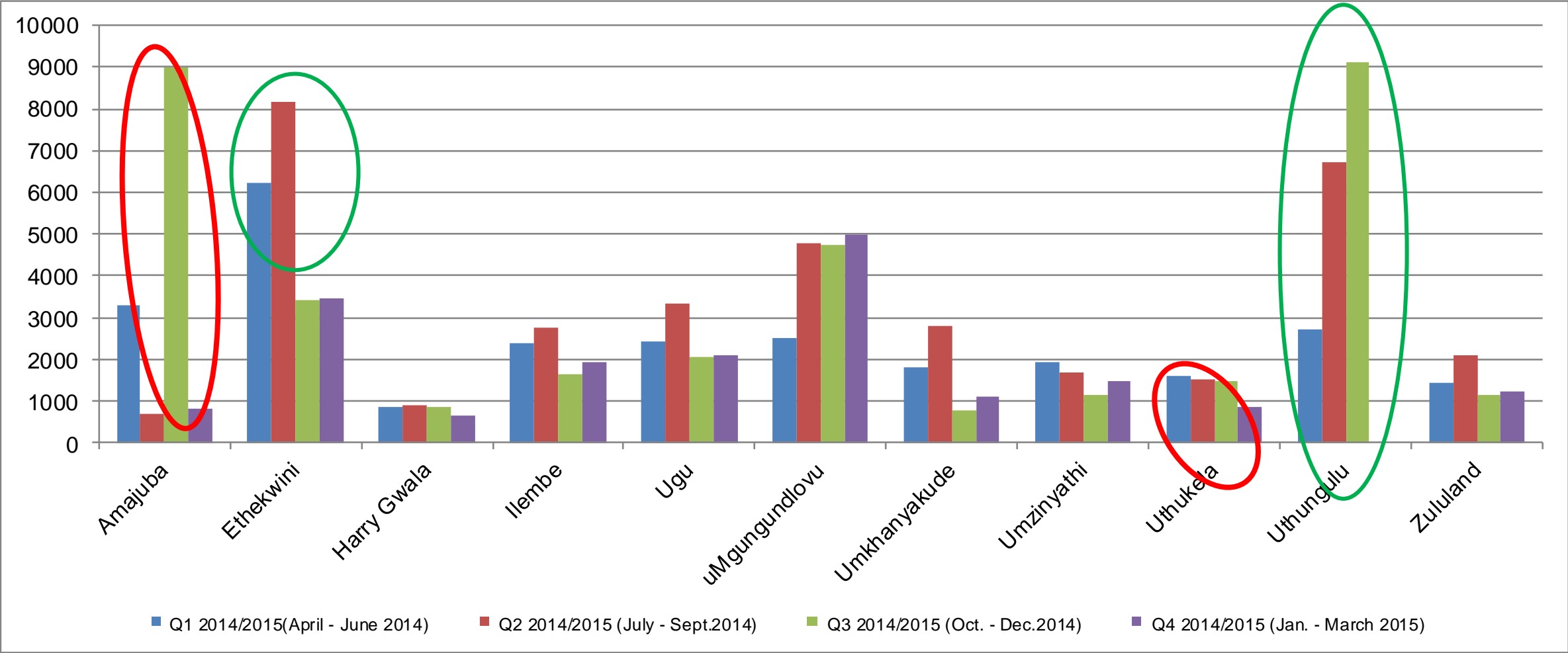
Analysis: Males aged 15-49 undergoing Medical Male Circumcision

- No district was able to achieve target for 2014/2015
- 8 districts: eThekweni, iLembe, Ugu, uMgungundlovu, uMkhanyakude, uMzinyathi, uMzinyathi, uThungulu and Zululand increased their MMC numbers between Q3 and Q4 2014/2015.
- Amajuba, Harry Gwala and uThukela showed decrease between Q3 and Q4 2014/2015
- uThukela showed consistent decrease over all the quarters in 2014/2015

Dashboard 10 : Males aged 15-49 undergoing medical male circumcision 2014/2015 per quarter (district)

	Q1 (Apr-June 2014)	Q2 (July – Sept. 2014)	Q3 (Oct.- Dec. 2014)	Q4 (Jan - March. 2015)	TOTAL	Annual Targets	Target Achieved
Amajuba	3277	682	8984	823	13766	18771	
eThekwini	6223	8159	3420	3464	21266	183019	
Harry Gwala	855	886	855	651	3247	18771	
iLembe	2407	2771	1637	1944	8759	23464	
Ugu	2415	3351	2046	2086	9898	32850	
uMgungundlovu	2493	4763	4748	4999	17003	51621	
uMkhanyakude	1798	2817	772	1102	6489	23464	
uMzinyathi	1940	1673	1158	1465	6236	18771	
uThukela	1602	1507	1464	858	5431	18771	
uThungulu	2729	6728	9115	16534	35106	42344	
Zululand	1435	2080	1131	1223	5869	37542	

Graph 10: Males aged 15-49 undergoing male medical circumcision 2014/2015 per quarter (district)



Analysis: Male Condoms Distribution

- 4 districts achieved distribution targets. uMgungundlovu and uMzinyathi were joined by iLembe, uThukela in achieving distribution targets.
- uMgungundlovu remains the district distributing most number of male condoms.
- uThungulu has shown consistent increase in distribution over the three quarters.
- uMgungundlovu has however shown consistent decrease over the quarters.

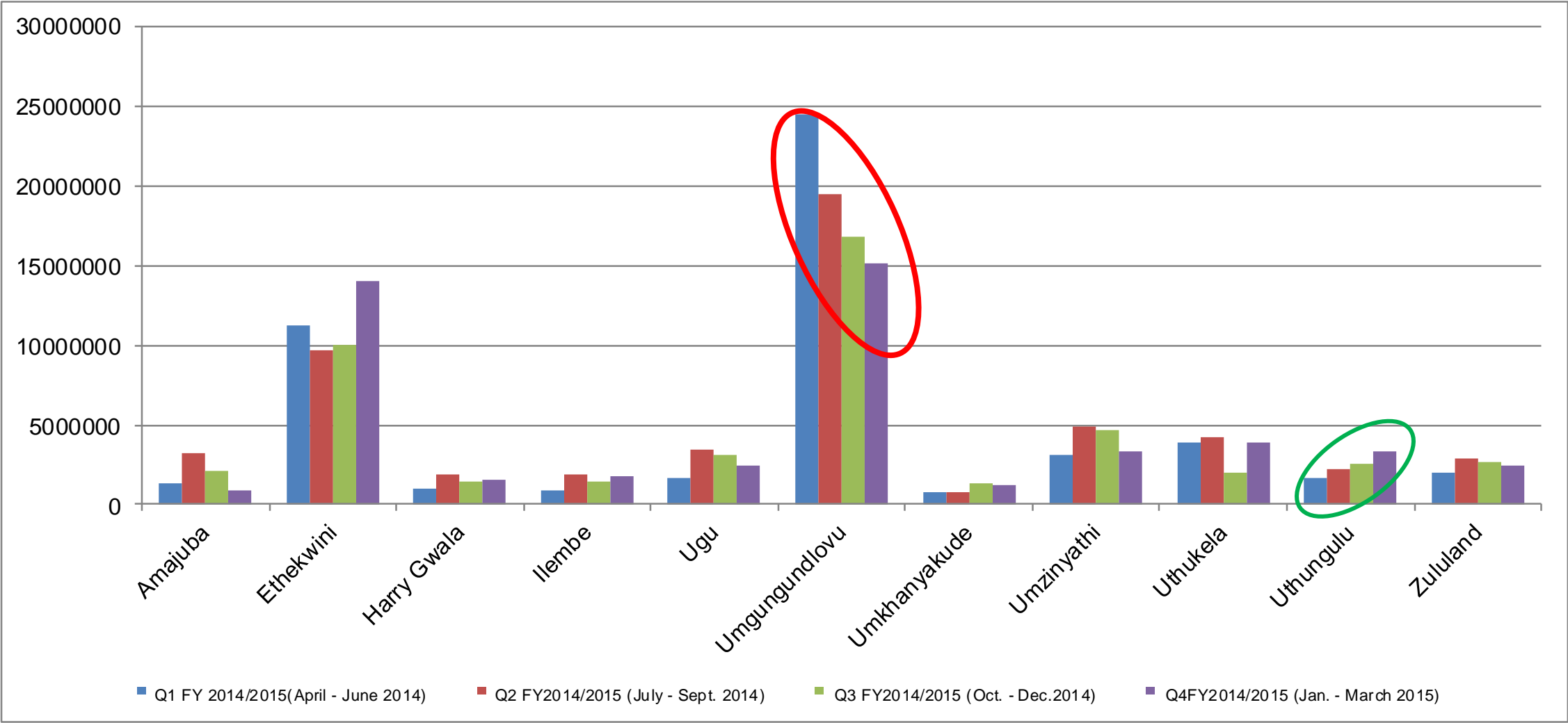
Analysis: Condoms distributed per male per quarter

- uMgungundlovu distributed the highest number of male condoms per male in 2014/2015.
- 4 districts: iLembe, uMgungundlovu, uMzinyathi, uThukela achieved the set targets
- iLembe, uMkhanyakude and uThungulu remained districts with the lowest number of condoms per male ranging 20 -34

Dashboard 11: Male condoms distributed 2014/2015 per quarter (district)

	Q1 FY2014/2015 (Apr-June 2014)	Q2 FY2014/2015 (Jul-Sept 2014)	Q3 FY2014/2015 (Oct-Dec 2014)	Q4 FY2014/2015 (Jan-March 2015)	Total 2014 / 2015	Annual Target 2014/ 2015	Target Achieved
Amajuba	1 331 147	3 192 000	2 138 102	894380	7 555 629	10 198 915	
EThekweni	11 235 647	9 683 480	10 028 297	14 056 926	45 004 350	73 678 306	
Harry Gwala	1 044 505	1 856 543	1 406 151	1 527 549	5 834 748	9 257 551	
iLembe	886 531	1 863 378	1 465 823	1 720 371	5 936 103	12 475 884	
Ugu	1 619 141	3 458 772	3 110 514	2 492 732	10 681 159	15 124 235	
uMgungundlovu	24 462 323	19 537 054	16 855 094	15 159 580	76 014 051	21 655 979	
uMkhanyakude	821 013	773 533	1 345 196	1186817	4 126 559	11 891 730	
uMzinyathi	3 119 233	4 862 896	4 651 083	3 363 758	12 877 737	9 434 893	
uThukela	3 921 329	4 201 349	2 040 971	3 926 358	14 090 007	13 403 444	
uThungulu	1 627 707	2 258 616	2 494 929	3317362	9 698 614	18 909 468	
Zululand	2 012 348	2 939 847	2 650 050	2413391	10 015 636	15 969 595	

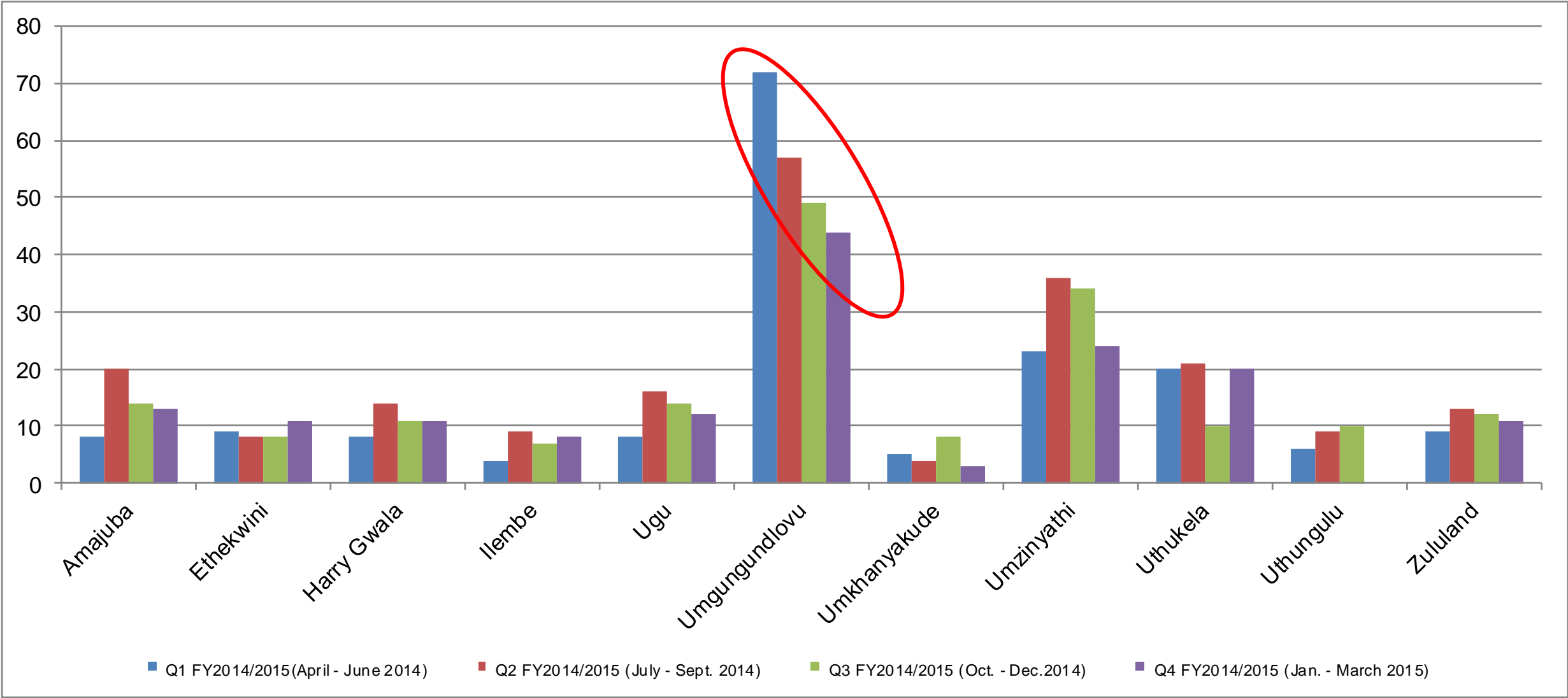
Graph 11 : Male condoms distributed 2014/2015 per quarter (district)



Dashboard 12: Condoms distributed per male to males aged >15 years 2014/2015 per quarter (district)

	Q1 FY2014/2015 (Apr-June 2014)	Q2 FY2014/2015 (Jul-Sept 2014)	Q3 FY2014/2015 (Oct-Dec 2014)	Q4 FY2014/2015 (Jan-March 2015)	Annual distribution per male	Annual target	Target Achieved
Amajuba	8	20	14	5	48	63	
eThekwini	9	8	8	11	36	58	
Harry Gwala	8	14	11	11	44	68	
iLembe	4	9	7	8	24		
Ugu	8	16	14	12	50	70	
uMgungundlovu	72	57	49	44	225	60	
uMkhanyakude	5	4	8	7	24	66	
uMzinyathi	23	36	34	24	117	68	
uThukela	20	21	10	20	71	67	
uThungulu	6	9	10	12	37	72	
Zululand	9	13	12	11	45	65	

Graph 12: Male condoms distributed per male per quarter aged >15 years and older 2014/2015 per quarter (district)



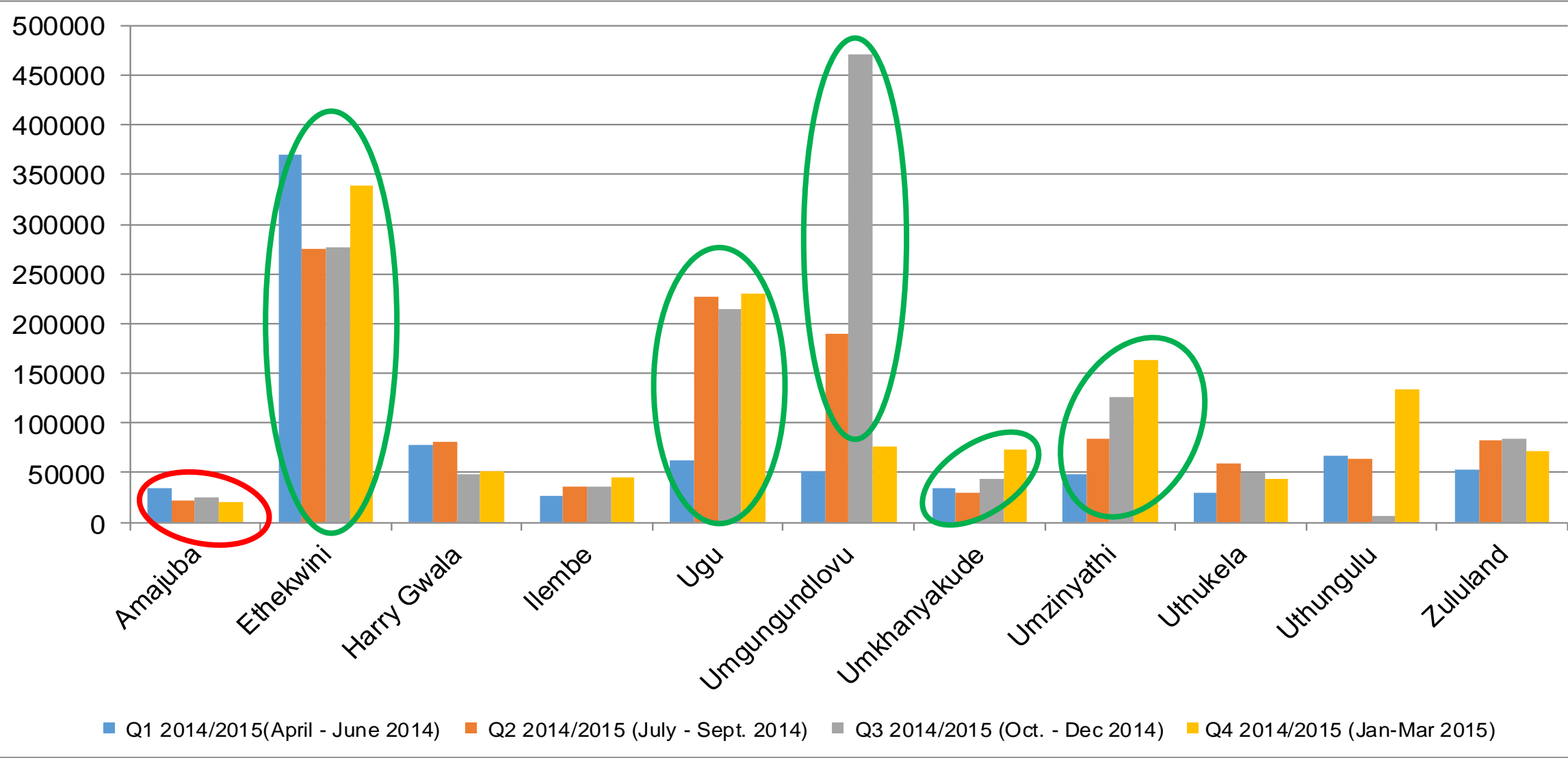
Analysis: Female Condoms Distribution

- All districts achieved target set.
- 3 districts eThekwini and Ugu joined uMgungundlovu as districts that distributed the highest number of female condoms in Q4.
- eThekwini, uMgungundlovu, uMzinyathi and Ugu distributed the highest number of female condoms in 2014/2015.
- Amajuba and uMkhanyakude distributed the lowest number of female condoms in Q4 2014/2015.

Dashboard 13: Female condoms distributed 2014/2015 per quarter (district)

	Q1 FY2014/2015 (Apr-June 2014)	Q2 FY2014/2015 (Jul-Sept 2014)	Q3 FY2014/2015 (Oct-Dec 2014)	Q4 FY2014/2015 (Jan-March 2015)	Total 2014/2015	Annual Target	Target Achieved
Amajuba	33928	21539	24834	20897	101198	170 369	
EThekweni	370710	274768	277381	338225	1261084	1 242 324	
Harry Gwala	78016	81194	47848	51435	258493	160 007	
iLembe	26698	36464	36699	45556	145417	206 737	
Ugu	62391	227642	214176	229479	733688	248 845	
uMgungundlovu	471609	307465	176460	77002	1032536	361 951	
uMkhanyakude	33903	29227	43153	73560	179843	195 532	
uMzinyathi	47918	84723	126165	163127	421 933	155 091	
uThukela	30016	59660	49308	43294	182278	222 489	
uThungulu	66353	63483	7051	134593	271480	313 543	
Zululand	52703	82667	84550	71653	291573	263 066	

Graph 13: Female condoms distributed 2014/2014 per quarter (district)



Analysis: Sexual Assault Cases

- 9 districts: Amajuba, eThekwini, iLembe, Ugu, uMgungundlovu, uMkhanyakude, uMzinyathi, uThukela and Zululand showed a decrease in sexual assault cases between Q3 and Q4 2014/2015
- Harry Gwala and uThungulu showed increase over Q3 and Q4 2014/2015
- Generally sexual assault cases decreased

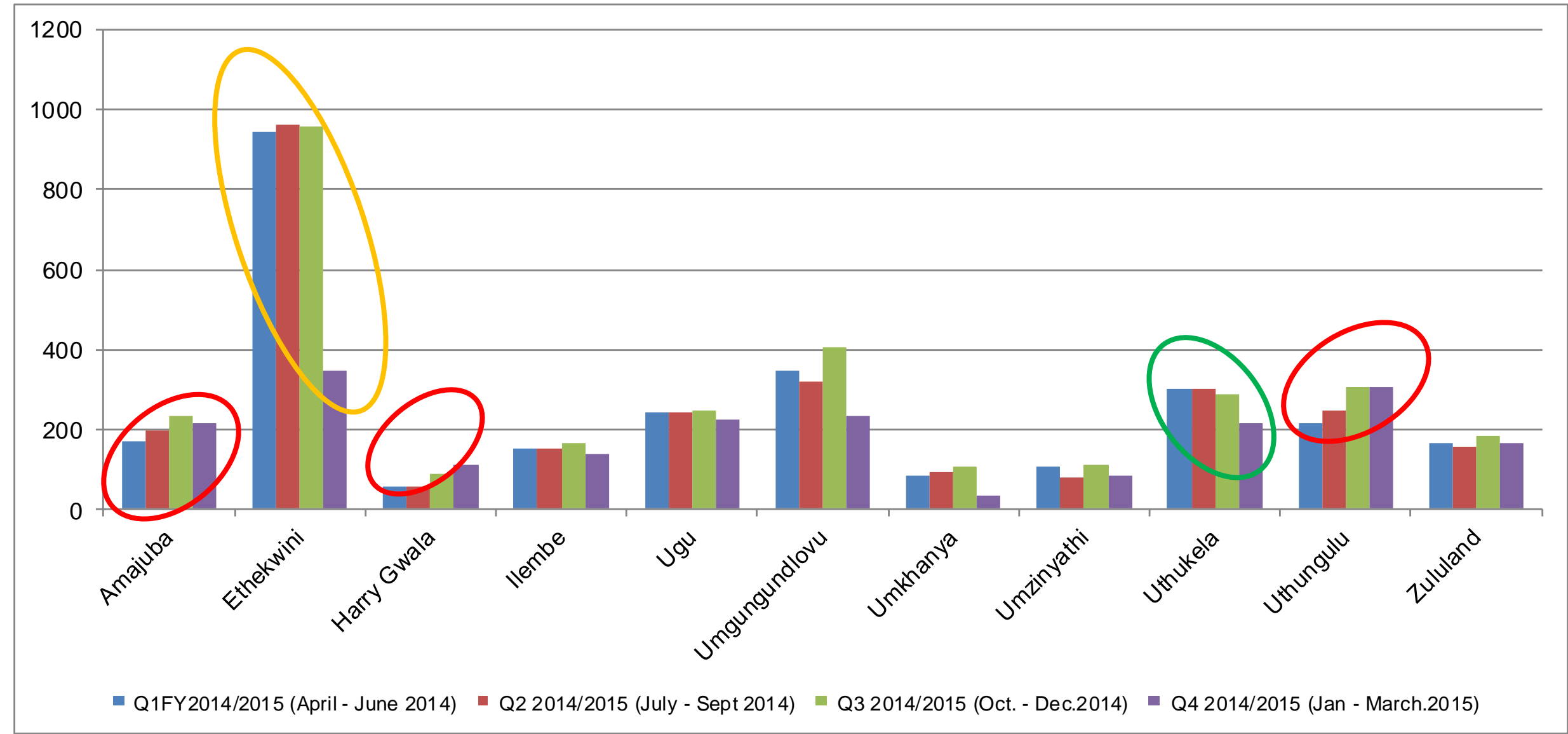
Analysis: Children under 12 Sexually Assaulted (%)

- Sexual Assault cases in children remains generally high across districts
- 7 districts: eThekwini, Harry Gwala, Ugu, uMgungundlovu, uMkhanyakude, uThukela and Zululand all showed an increase between Q3 and Q4
- Amajuba and uThungulu only districts that recorded a decrease between Q3 and Q4 2014/2015

Dashboard 14: New Sexual Assault Cases 2014/2015 per quarter (district)

	Q1 (Apr-June 2014)	Q2 (July – Sept 2014)	Q3 (Oct - Dec 2014)	Q4 (Jan. - March 2015)	TOTAL Cases 2014/ 2015
Amajuba	169	198	233	216	816
EThekweni	944	963	956	346	3209
Harry Gwala	55	57	89	111	312
iLembe	152	153	163	139	607
Ugu	242	242	248	223	955
uMgungundlovu	345	321	406	232	1304
uMkhanyakude	106	80	110	34	330
uMzinyathi	96	113	95	83	387
uThukela	302	302	287	217	1108
uThungulu	247	305	284	1050	1071
Zululand	163	158	183	165	669

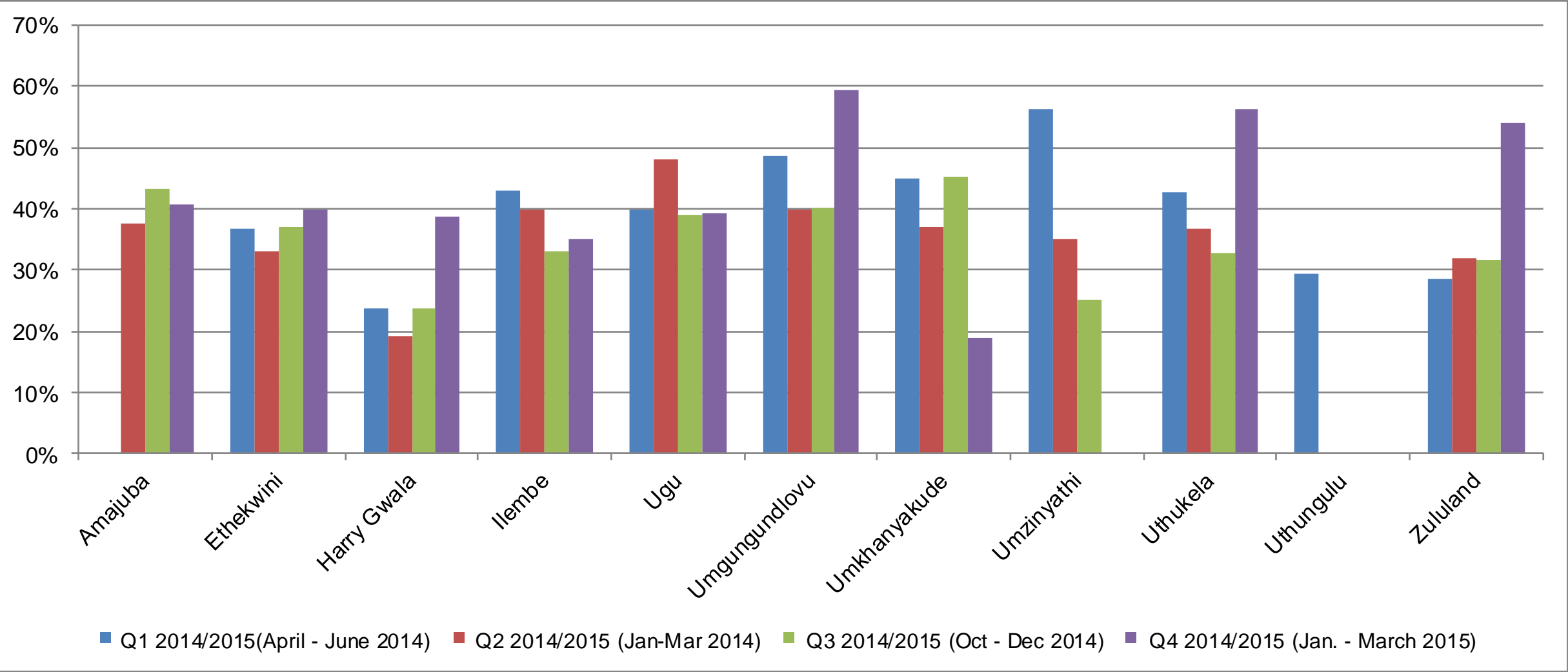
Graph 14: New Sexual Assault Cases 2014/2015 by quarter (district)



Dashboard 15: Children under 12 Sexually Assaulted (%)

	Q1 (Apr-June 2014)	Q2 (July – Sept 2014)	Q3 (Oct. – Dec 2014)	Q4 (Jan – March 2015)	TOTAL 2014/2015
Amajuba		37.60%	43.30%	40.70%	40.53%
EThekweni	36.70%	33.00%	37.00%	40.00%	36.70%
Harry Gwala	23.60%	19.30%	23.60%	38.70%	35.07%
iLembe	43.00%	40.00%	33.00%	35.00 %	37.80%
Ugu	40.00%	48.00%	39.00%	39.40%	41.60%
uMgungundlovu	48.7%	39.9%	40.1%	59.5%	47.10%
uMkhanyakude	45.00%	37.00%		59.00%	47.17%
uMzinyathi	56.30%	35.00%	25.00%		38.77%
uThukela	42.70%	36.80%	32.80%	56.20%	56.17%
uThungulu	29.10%	39.00%	41.60%	37.00%	36.75%
Zululand	28.40%	32.0%	31.70%	54.00%	36.50%

Graph 15: Children under 12 Sexually Assaulted (%) per quarter (district)



Analysis: Clients receiving ART Services

- All districts showing increased numbers of clients on ART on a consistent basis.

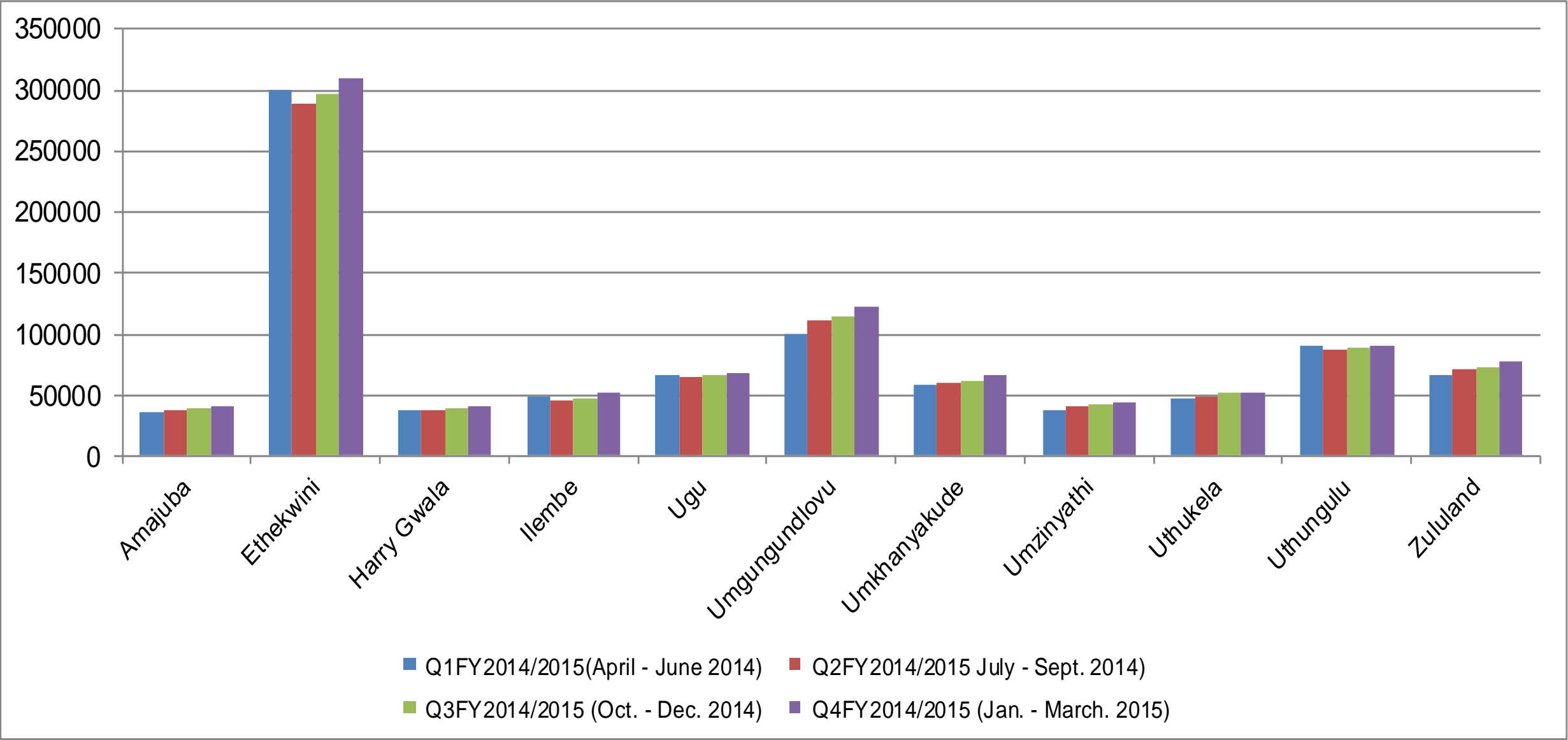
Analysis: ART clients lost to follow up

- 5 districts: Amajuba, eThekweni, Ugu, uMgungundlovu, uMzinyathi recorded increases in numbers lost to follow up between 2014/2015.
- uThukela with one of the highest number of lost to follow up

Dashboard 16: Clients receiving ART 2014/2015 per quarter(district)

	Q1 (Apr-June 2014)	Q2 (July - Sept 2014)	Q3 (Oct - Dec 2014)	Q4 (Jan - March 2015)
Amajuba	35804	38176	38901	41272
EThekweni	299877	289729	297530	309119
Harry Gwala	37121	38307	39423	41540
iLembe	48955	45221	47908	51406
Ugu	66657	65382	67132	67432
uMgungundlovu	105499	117760	119932	121135
uMkhanyakude	58909	59746	62355	66359
uMzinyathi	37320	41063	42423	44194
uThukela	47357	49026	51829	55769
uThungulu	90185	87102	89508	91013
Zululand	65640	71125	73311	78268

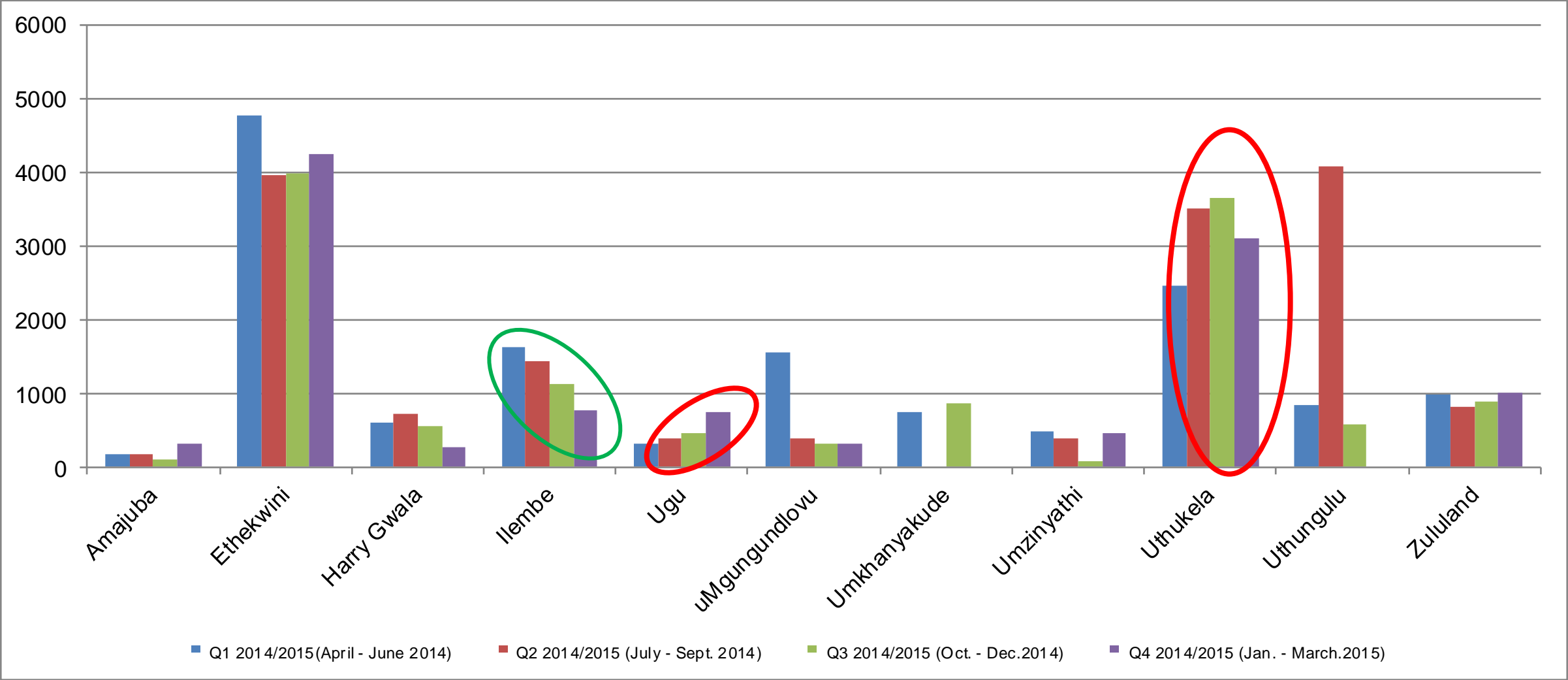
Graph 16: Clients receiving ART 2014/2015 per quarter(district)



Dashboard 17: ART clients lost to follow up 2014/2015 per quarter(district)

	Q1fy2014/2015 (Apr-June 2014)	Q2FY2014/2015 (July – Sept. 2014)	Q3FY2014/2015 (Oct. - Dec.2014)	Q42014/2015 (Jan. – March 2015)	TOTAL 2014/2015
Amajuba	176	181	114	314	785
eThekwini	4766	3966	3992	4252	16976
Harry Gwala	614	718	552	269	2153
iLembe	1627	1432	1127	767	4953
Ugu	306	379	458	744	1887
uMgungundlovu	1569	385	315	318	2587
uMkhanyakude	753		859		1612
uMzinyathi	483	399	72	453	1407
uThukela	2470	3508	3662	3114	12754
uThungulu	839	4093	582	1973	7487
Zululand	990	821	898	1016	3725

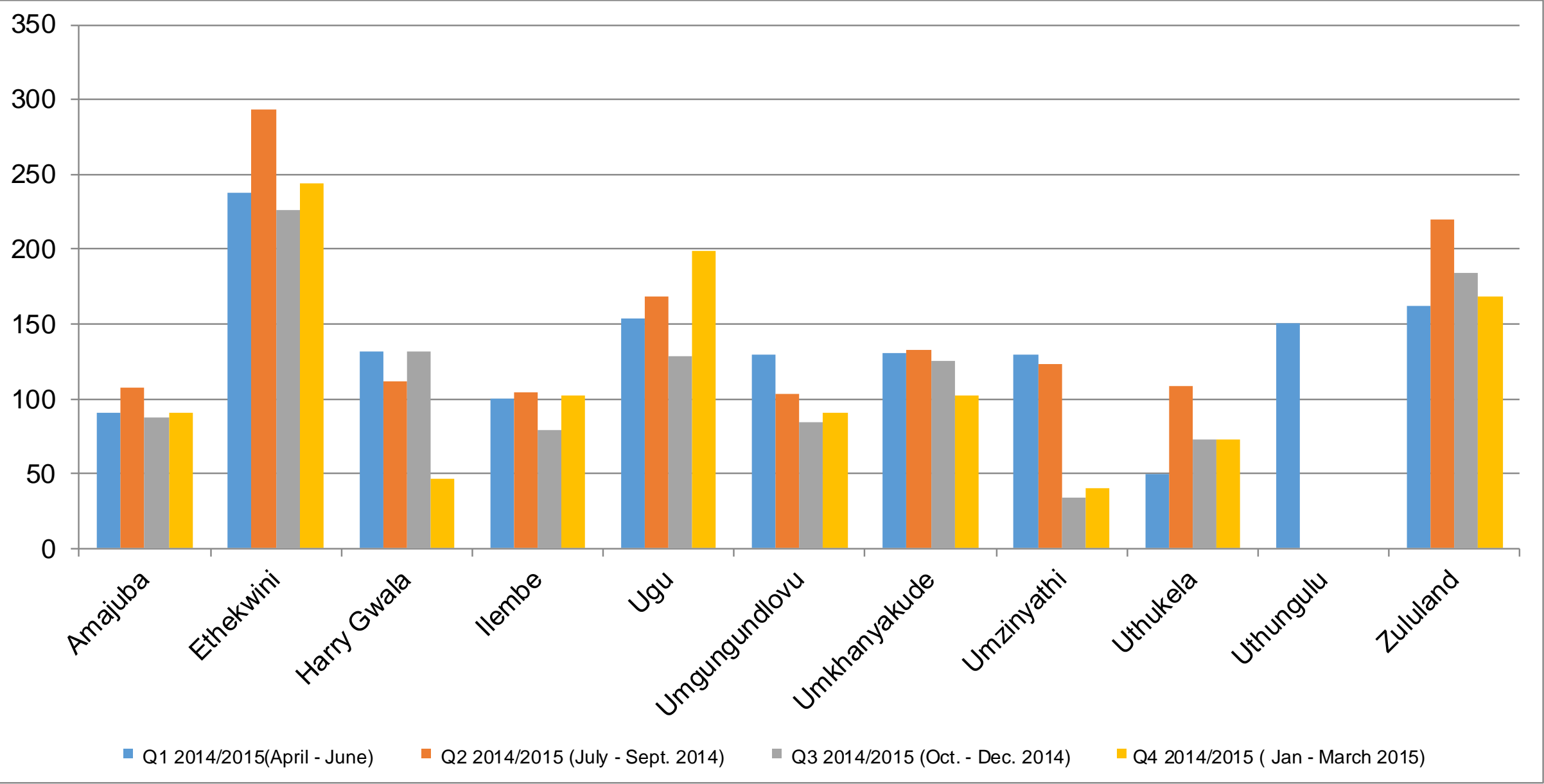
Graph 17: ART clients lost to follow up



Dashboard 18: ART clients deregistered due to death 2014/2015 per quarter(district)

	Q1 (Apr-June 2014)	Q2 (July – Sept. 2014)	Q3 (Oct. - Dec. 2014)	Q4 (Jan. - March 2015)	TOTAL 2014/2015
Amajuba	91	107	87	91	376
eThekwini	238	293	226	244	1001
Harry Gwala	132	112	132	46	422
iLembe	100	104	79	102	385
Ugu	154	168	128	199	521
uMgungundlovu	129	103	84	91	407
uMkhanyakude	130	133	125	102	490
uMzinyathi	129	123	34	40	326
uThukela	50	108	73	69	300
uThungulu	150	1981	41	124	2296
Zululand	162	220	184	168	734

Graph 18:ART clients deregistered due to death 2014/2015 per quarter(district)



Dashboard 19: LAC submitting reports 2014/2015 per quarter

	# of LMs	Q1 FY2014/2015 (Apr-June 2014)	Q2 FY2014/2015 (Jul-Sept 2014)	Q3 FY2014/2015 (Oct-Dec 2014)	Q4 FY2014/2015 (Jan-March 2015)
Amajuba	3	1	1	1	1
eThekwini					
Harry Gwala	5	5	5	4	3
iLembe	4	2	0	2	3
Ugu	6	1	2	0	4
uMgungundlovu	7	5	5	6	7
uMkhanyakude	5	5	5	5	5
uMzinyathi	4	3	3	3	3
uThukela	5	3	2	4	2
uThungulu	6	1	4	3	3
Zululand	5				

Dashboard 20: WAC submitting reports 2014/2015 per quarter

	# of Wards	Q1 FY2014/2015 (Apr-June 2014)	Q2 FY2014/2015 (Jul-Sept 2014)	Q3 FY2014/2015 (Oct-Dec 2014)	Q4 FY2014/2015 (Jan-March 2015)
Amajuba	46	21		21	21
eThekwini	103				
Harry Gwala	55	11	11	16	20
iLembe	74	65	0	6	0
Ugu	84	43	65	45	32
uMgungundlovu	84	43	47	62	51
uMkhanyakude	68	0	0	0	0
uMzinyathi	53		3	0	0
uThukela	73				
uThungulu	99		7	0	
Zululand	98				